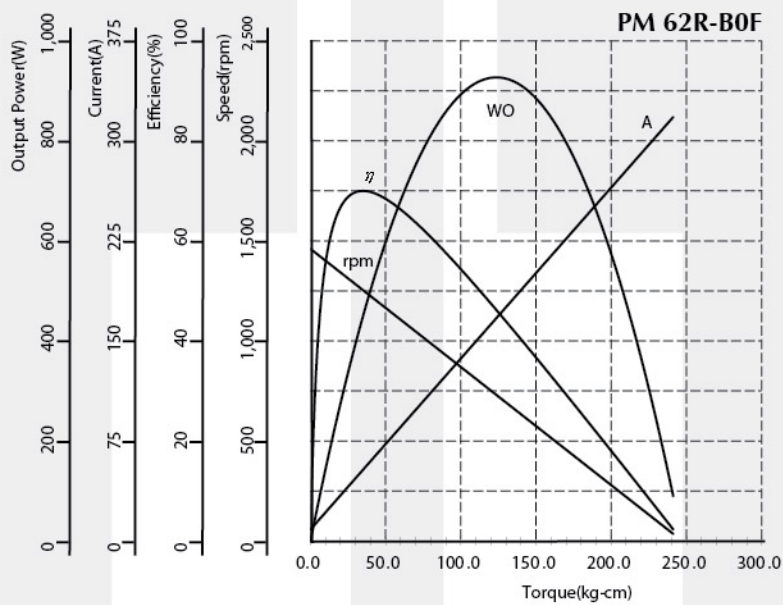




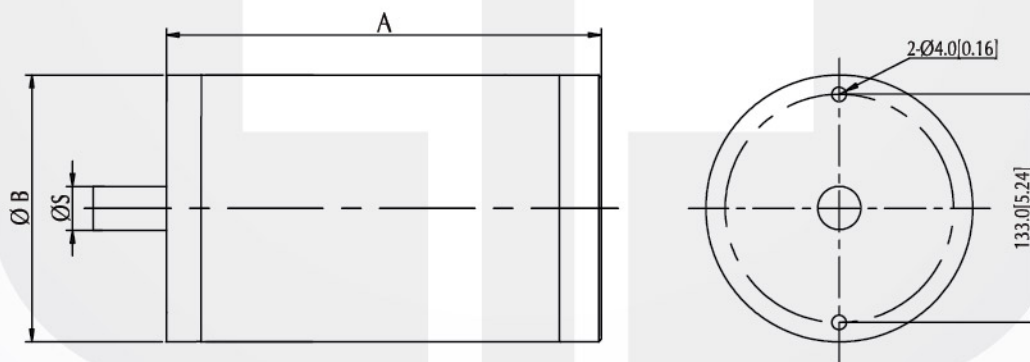
## Industrial PMDC Motor - PM62R Series

Voltage : 12 - 36V DC  
 Rated Speed : 950 - 3,600rpm  
 Rated Torque : 34.90 - 46.89kg-cm[30.3 - 40.7lb-in]  
 Rated Input Power : 160 - 3,000W  
 Insulation Class : A, E, B  
 Motor Diameter :  $\varnothing$ 156mm[6.14inch]  
 Typical Application : Chemical Pump, Polisher

### Performance Curve



### Dimension (mm[inch])



### Performance (testing under room temperature)

Model	Dim A mm[inch]	Dim B mm[inch]	Dim S mm[inch]	Rated Voltage (V DC)	No Load		At Maximum Efficiency			Maximum Power				
					Speed (rpm)	Current (A)	Speed (rpm)	Current (A)	Torque (kg-cm[lb-in])	Output (W)	Speed (rpm)	Current (A)	Torque (kg-cm[lb-in])	Output (W)
PM62R-B0F	209.8[8.26]	156[6.14]	11.1[0.44]	12	1,460	8.77	1,254	53.5	34.90[30.3]	449	729	167.87	123.60 [107.30]	925
PM62R-B0I	200.5[7.89]	156[6.14]	11.1[0.44]	36	1,180	1.78	1,063	18.04	46.89[40.7]	511.9	590	84.01	236.77[205.51]	1434.6

The information above is for reference only, detailed specification is subject to final confirmation

Email: sales@cclmotors.com Website: <http://www.cclmotors.com>  
4/F, No. 6, On Lok Mun Street, On Lok Tsuen, Fanling, N.T., Hong Kong.

Tel: (852) 3125 0000 Fax: (852) 3125 0125